

VISIT WINDSOR & BEYOND

TRAVEL TRADE GUIDE



Discover Places to Stay, Places to Visit, Tour Guides, Itineraries and Events around The Royal Borough of Windsor & Maidenhead.

www.windsor.gov.uk/travel-trade



WELCOME TO THE ROYAL BOROUGH OF WINDSOR & MAIDENHEAD

Dear Travel Trade Colleague,

Are your customers looking for a stylish break, close enough to the capital to assert a cosmopolitan air, yet far enough away to offer a slightly more relaxed pace of life in a surprisingly rural setting? With easy access to London and Heathrow, the Royal Borough is a great place to explore and to use as a base for a day out to the capital.

Crown Estate, National Trust and Green Belt land make this region one of the greenest in the South East. Add to that arguably the most stunning 20-mile stretch of the River Thames, 1,000 years of history and an unrivalled royal heritage, and it's easy to see why it has become home to some of the country's top sporting and cultural events, a few of the UK's most iconic visitor attractions and some surprising hidden gems.

Windsor Castle is the dazzling centrepiece sat high on the hill for all to admire. The oldest and largest castle in the world, it dominates the skyline and never ceases to stop first-time visitors in their awestruck tracks.

In this travel trade guide, you'll find details of things to see and do, activities and experiences beyond the Castle, plus places to stay and food and drink venues.

Whether you're looking for ideas for groups or independent travellers, we've created a range of themed itineraries to help you create inspiring tours. We think you'll find there's more than enough to keep your customers entertained for at least a couple of days.

An interactive edition of this guide is available at www.windsor.gov.uk/travel-trade and if you would like to join our mailing list for regular news and product updates please sign up here windsor.gov.uk/travel-trade/travel-trade-enewsletter.

We look forward to welcoming you and your customers to VisitWindsor.

Julia White

Visitor Manager

Royal Borough of Windsor & Maidenhead

Email: Julia.White@RBWM.gov.uk

Contents

WINDSOR:

Beyond the Castle	03
Annual Events around the Royal Borough	03
Towns and Villages	04-05
Map of the Royal Borough	05
Royal Windsor	06
Royalty & Racing	07

TOUR INSPIRATION:

Hidden Gems, Culture Breaks, Film & TV	08-09
Countryside, Parks and Gardens	10
Foodie Delights	10-11
48 Hours, Luxury & Unique Experiences	12-13

DIRECTORY:

Things to See & Do	14-17
Places to Eat & Drink	18
Tour Guides, Suggested Walking Tours	19
Places to Stay	20-21
General Information	22-23

WINDSOR: BEYOND THE CASTLE

The Royal Borough of Windsor was first recorded in 1130, owing its existence to the siting of William the Conqueror's castle, first established in 1086. Ever since, the town and the Castle have been inextricably linked. For visitors, a tour of Windsor Castle is a must-see, but there are many other attractions for groups and individuals to enjoy within the Royal Borough of Windsor and Maidenhead.

Take a sightseeing cruise on the River Thames with French Brothers, who offer a relaxing time afloat. A short drive across Windsor Great Park, enjoy a tour of the beautiful Savill Garden, managed by the Crown Estate. Further along the river lie the hidden gems of Maidenhead Heritage Centre, where you can fly the Spitfire Simulator, and the Stanley Spencer Gallery where exhibitions of the great 20th-century British artist's work change every six months.

For pure entertainment LEGOLAND® Windsor Resort can't be beaten with its rides and LEGO® built creations, or try one of the new Escape Room experiences. And for

evenings, the Theatre Royal Windsor has a full calendar of live entertainment and the annual pantomime, or visit the historic Old Court Arts Centre and relax in front of an art house or blockbuster film.

Specialist interests can also be accommodated – there is a tiny chocolate factory in Windsor where you can make your own bonbons, and a brewery where you can tour and sample their ales. There are a range of exciting racing events at Ascot and Royal Windsor racecourses that are ideal for groups.

Tourers can enjoy guided walking tours that cross the picturesque pedestrian bridge from Windsor to Eton and hop-on, hop-off bus tours, which take in charming Datchet and stop at the Royal Farm Shop in Old Windsor.

There is plenty to do in the Windsor area for a few days, so stay over and take your time. There are accommodation options to cater to all your needs.



01

Annual Events

A full calendar of events is available at windsor.gov.uk/

whats-on

MAY

Royal Windsor Horse Show

rwhs.co.uk

JUNE

Royal Ascot

ascot.com

JUNE

Parallel Windsor

parallellifestyle.com/windsor2022

JULY

Royal Swan Upping

royalswan.co.uk

AUGUST

Windsor Food Festival

thelocalfoodfestival.com/the-windsor-food-festival

SEPTEMBER

Windsor Festival

windsorfestival.com

OCTOBER

LEGOLAND® Windsor's Brick or Treat

The most spook-tacular event of the year!
legoland.co.uk/explore/special-events/brick-or-treat

NOVEMBER-JANUARY

Windsor Great Park Illuminated

windsorilluminated.com



02

01 The Stanley Spencer Gallery
02 Windsor Festival

THE ROYAL BOROUGH OF WINDSOR & MAIDENHEAD: TOWNS AND VILLAGES

Crowned by **Windsor Castle** and linked by the **River Thames**, the Royal Borough of Windsor & Maidenhead has a rich mix of history, heritage and culture.

1. ASCOT (EAST COTE)

In 1711 it was Queen Anne who first saw the potential for a racecourse at East Cote while out riding and the first race took place that year. By 1752 the popularity of attending the racing at **Ascot** was popular in social circles.

2. BISHAM

The dense woods at Bisham provide a dramatic backdrop to its historic buildings. The best-known sight in the village is Bisham Abbey, actually a 13th-century manor house built by the Knights Templar. Today a Conference Centre and base of the National Sports Centre.

3. BRAY

Is a pretty riverside parish between Maidenhead and Windsor, offering fine dining with worldwide acclaim due to the Michelin stars acquired by its resident chefs including Heston Blumenthal. In this quaint village there are seven stars shared between the Waterside Inn, the Fat Duck and The Hinds Head.

4. COOKHAM

Is one of the most popular Thameside resorts with its many superb pubs, restaurants and independent retailers. It's home to the **Stanley Spencer Gallery**. One of the greatest British artists of the 20th century, Sir Stanley Spencer was born in the village in 1891. A visit to the gallery is highly recommended followed by a walk around the village and along the Thames Path in the footsteps of the genius himself.

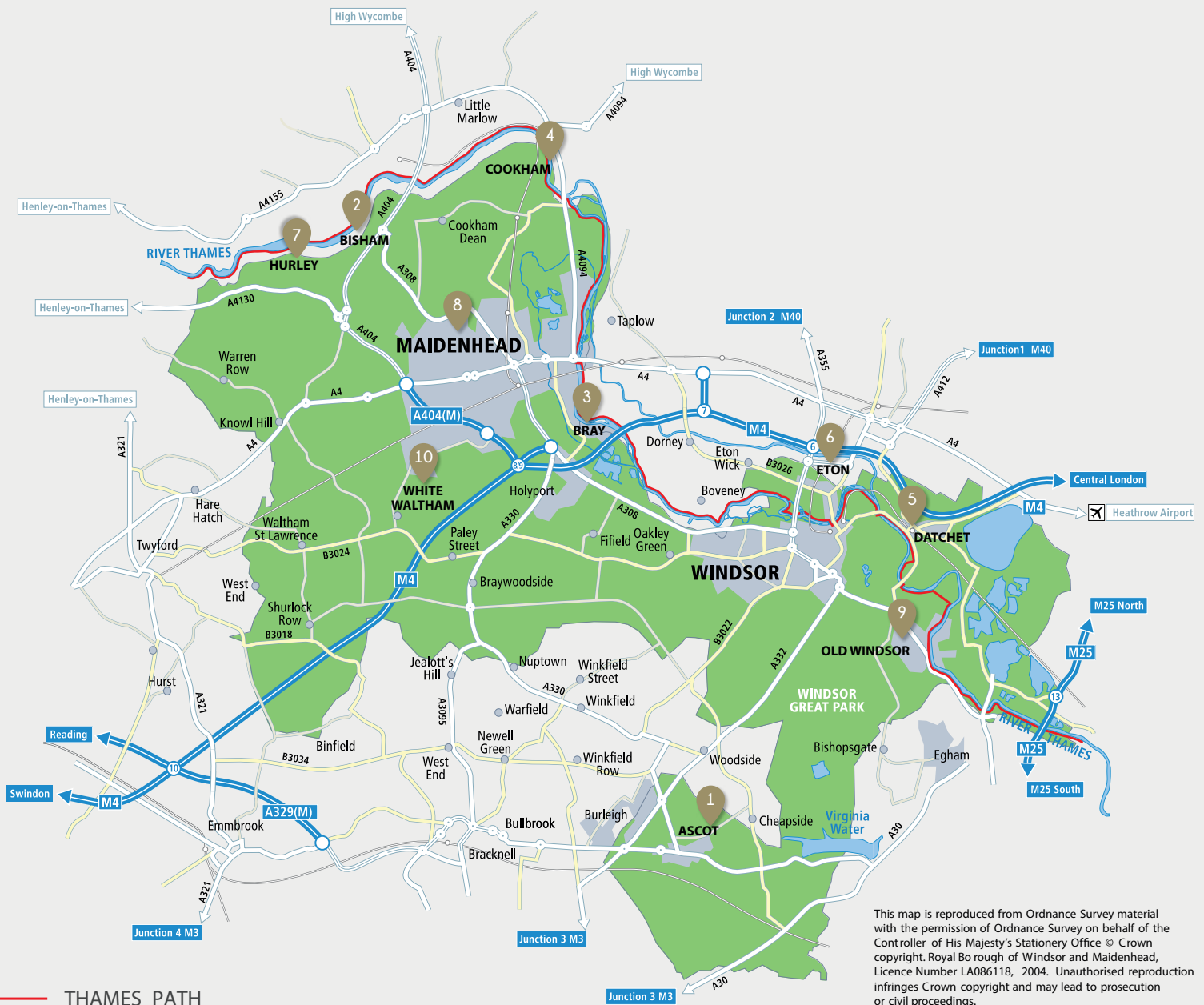
5. DATCHET

Sits on the banks of the Thames and was the inspiration for Sir Izaak Walton who wrote *The Compleat Angler*, which Shakespeare mentioned in the *Merry Wives of Windsor*. To commemorate Queen Victoria's Golden Jubilee in 1887 an oak tree was planted in the middle of the village; a neighbouring tree was planted for her Diamond Jubilee. You can hire a self-drive boat from **Kris Cruisers** here.



- 01 Eton
- 02 Bray
- 03 Cookham
- 04 Maidenhead bridge
- 05 View of Cliveden from the River Thames





THAMES PATH

6. ETON

On the opposite bank of the Thames to Windsor, Eton has been a settlement since Saxon times. The town quickly grew along the present High Street during the Middle Ages in response to the growth of Windsor. The river was never seen as a barrier. It is impossible to think of Eton without reference to its famous public school, Eton College, and indeed the later history of the town is inseparably entwined with that of the college. Founded in 1440 by Henry VI, the college at Eton was modelled on the new college at Winchester. Take a stroll from the bridge along the High Street. Don't miss an original marker for the first-ever modern marathon route from Windsor to London from the 1908 London Olympics, or Timbralls where James Bond creator, Ian Fleming, lived during his time at Eton.

7. HURLEY

The river has always been central to the history of Hurley with records of a ford going back to the 6th century. A monastery was founded here in 1086 and dissolved in 1536. Here you'll find the Olde Bell Inn which dates from 1135 and was built as the monastic guest house. It is one of the oldest pubs in England.

8. MAIDENHEAD

The largest town in the Royal Borough. The history of Maidenhead can be told through its river, its roads and its railway at **Maidenhead Heritage Centre**. 'Grandma flew Spitfires' is the only exhibition in the world dedicated solely to the Air Transport Auxiliary (ATA), many of whom were women, one of the forgotten stories of World War II.

Don't miss Isambard Kingdom Brunel's famous brickbuilt Sounding Arch, which carries the rail line over the Thames. The arch was the setting for Turner's lyrical and dynamic painting *Rain, Steam, Speed* (1844).

The beech woods that rise steeply on the east bank of the river here lead to **Cliveden**, set on the cliffs, 200 feet above the Thames. Cliveden was once the home of Lady Astor; the house is now a hotel, surrounded by nearly 400 acres of National Trust gardens and woodland and was where Ms Meghan Markle stayed the night before her marriage to Prince Harry.

9. OLD WINDSOR

Was the oldest Saxon town in Berkshire and the seat of Edward the Confessor. It continued in importance up until about 1100 when it was gradually overshadowed by the building of **Windsor Castle** two miles upstream. The parish includes within its boundaries most of Windsor Great Park. On the outskirts of Old Windsor is the Windsor Farm Shop, stocking a range of products from the Royal Farms and small local specialist suppliers. Close by is historic Runnymede.

10. WHITE WALTHAM

During World War II an airfield was established at White Waltham which was subsequently used as the headquarters of Home Command of the RAF.

More detailed information on the towns and villages is available at windsor.gov.uk/explore/towns-and-villages

ROYAL WINDSOR

There is no escaping the strong connection between the Royal Family and the Royal Borough of Windsor & Maidenhead. On 17 July 1917, George V changed the Royal Family's official name from Saxe-Coburg and Gotha to the House of Windsor.



DISCOVER ROYAL CONNECTIONS

WINDSOR Castle

The Castle is an official residence of His Majesty The King and was Queen Elizabeth II's favourite weekend home. The magnificent State Apartments are adorned by outstanding works of art and Old Master paintings, as well as a masterpiece in miniature, Queen Mary's Dolls' House. Within the Castle walls is St George's Chapel, the resting place of 11 British monarchs including Henry VIII, Charles II and Queen Elizabeth II as well as the site of recent royal weddings.

Choose the right day to visit and you'll also catch Changing the Guard. This is one of the highlights of a visit to Windsor and takes place all year round on Tuesdays, Thursdays and Saturdays, weather permitting.

ROYAL WINDSOR STATION

Set within the original Victorian rail terminus, designed to celebrate Queen Victoria's Diamond Jubilee, Windsor Royal Station offers fabulous shopping and eating, by appointment to everyone.

THE ROYAL FARMS WINDSOR FARM SHOP

The shop opened originally to sell locally-sourced goods and produce from the Royal Estates and The Great Park. Today coaches are welcome to pull in and passengers can enjoy tea in the coffee shop as well as buy edible souvenirs.

WINDSOR GUILDHALL

Don't miss the historic Windsor Guildhall, set just in front of the Castle and featuring clever architecture by Sir Christopher Wren. It was chosen by King Charles for his wedding to Camilla Parker-Bowles, and Sir Elton John for his civil partnership.

THE SAVILL GARDEN

The Savill Garden is a hidden gem in the heart of Windsor Great Park. Commissioned by George V, the Garden was created in 1932 by Sir Eric Savill and, under the careful guidance of the Keeper of the Gardens and team of horticulturists, it's as majestic today as it was then. Visit and you will be connecting with decades of royal history from the original weeping willow tree that still stands today to many others.

ROYAL RIVER THAMES

The River Thames flows through the Royal Borough and its banks provide many historic royal connections. The Normans developed the idea of the royal river between the Tower of London and Windsor. In Saxon times, Old Windsor was the site of the original Windsor Castle, a palace for Edward the Confessor.



01 The Grand Reception Room, Windsor Castle.
Royal Collection Trust / (c) His Majesty King Charles III 2022.

02 Windsor Royal Station

ROYALTY & RACING

Since 1711, Ascot Racecourse has hosted the world's greatest racehorses in a setting fit for Royalty, and there's no better place at which to celebrate this year.

Excitement, passion, flair, and fashion fill the grounds of the world-famous racecourse on 26 annual racedays.

ROYAL ASCOT

Revered across the globe, Royal Ascot attracts the finest horses to compete for over £9,500,000 total prize money. Synonymous with sartorial elegance, magnificent millinery, exquisite cuisine and unforgettable celebration, it is an event that must be seen to be believed.

Situated at the height of the British summer social season, from Tuesday 20th to Saturday 24th June 2023, Royal Ascot is the perfect occasion to enjoy with friends, family and loved ones. The thunder of hooves, the roar of the crowd, the delicious refreshments and the outlandish outfits combine to create an unforgettable experience to be shared and remembered with your nearest and dearest.



ASCOT RACEDAYS

For those who prefer an atmosphere that's a little more relaxed, Ascot hosts 21 other racing events each year, each with its own individual character.

Peroni Nastro Azzurro May Racing Weekend

The summer kicks off with a social weekend at the racecourse. New for 2023, Peroni Nastro Azzurro will be taking over the racecourse, offering the perfect chance for racegoers to enjoy the action of the Flat season whilst also the chance to kick back, relax and enjoy a fun day out with friends.

QIPCO King George Weekend

This glittering midsummer weekend features a sparkling cocktail of style, socialising and exceptional racing. The highlight of the weekend is the King George VI and Queen Elizabeth QIPCO Stakes, which has seen many racing greats first-past-the-post to enter the Winner's Enclosure to the jubilant sound of adoring cheers from the crowds.

Dubai Duty Free Shergar Cup

The best jockeys from across the globe descend on Berkshire for a day of team competition under the August sun. Once a thrilling day of racing is over, the sound of music starts to fill the air as a popular concert kicks off in the Old Paddock allowing racing fans to finish the day in a festival-like atmosphere with great food and feel-good tunes.

OTHER RACEDAYS

Four dedicated family days, complete with free entertainment for little ones and teens through to grown-ups, take place at Ascot each year. From music performances to fairground rides, face painting, fireworks, and seasonal delights – there's an occasion at Ascot to suit every preference throughout both the Flat and National Hunt seasons.

Discover more at ascot.com

EXPLORE THE ROYAL BOROUGH

Looking for tour inspiration outside the obvious? Check out our themed itinerary ideas to help you put together a tailored tour, or mix and match the places included to surprise and delight your visitors. If choosing is tough, just stay a while and do it all!



01 Norden Farm Centre for the Arts, Maidenhead
02 Spitfire Simulator, Maidenhead Heritage Centre
03 The Old Court, Windsor
04 Dorney Court, Dorney, Nr Windsor

HIDDEN GEMS

Even if you know the Windsor area well, there are some hidden gems you can easily find, just a little off the beaten track around the Royal Borough's other major town, Maidenhead. Take a 90-minute cruise from Windsor to Maidenhead with French Brothers.

MAIDENHEAD HERITAGE CENTRE

The centre presents the history of Maidenhead from Roman times to the present, with a permanent exhibition on the Air Transport Auxiliary, which was stationed at nearby White Waltham. This is why you can try a Spitfire Simulator Experience as part of your visit! Windsor 6.4 miles.

STANLEY SPENCER GALLERY

Just outside Maidenhead, on the River Thames in Cookham, is where you'll find a Gallery dedicated to the work of Stanley Spencer, one of the greatest 20th-century British artists. Group talks and tours of the Gallery and surrounding village are available, and special exhibitions change every six months. Maidenhead 3.5 miles, Windsor 9 miles.

NORDEN FARM CENTRE FOR THE ARTS

Norden Farm Centre for the Arts is built on the site of an ancient dairy farm on the outskirts of Maidenhead. A thriving arts centre, open five days a week, it includes an art gallery, studio theatre, main auditorium for film and live performance, Café Bar, a Georgian farmhouse and 18th-century Long Barn which can be booked for a bespoke meal. Maidenhead 1.5 miles, Windsor 7.4 miles.

WINDSOR & MAIDENHEAD BOAT COMPANY

Embark at Maidenhead's Riverside Gardens and enjoy an excursion on board the Georgian, including lunch or tea, courtesy of a Windsor & Maidenhead Boat Company's river cruise.



ACCOMMODATION

CIM MOOR HALL

The elegant surroundings of the 19th-century Manor House create the perfect backdrop for your tour. Located in the idyllic village of Cookham it has 80 bedrooms and the Edinburgh Restaurant which seats 140. Maidenhead 3.5 miles, Windsor 9.4 miles.



CULTURE BREAKS

There is plenty of choice for culture vultures in the Royal Borough, whether it's entertainment, museums, a festival or art fair you're looking for.

THEATRE ROYAL

Windsor's major arts venue is the Edwardian Theatre Royal which sits directly across from the Castle. It features an eclectic programme of plays, musicals, light opera and live music.

FILM & TV

You loved the film so now why not visit one of the Royal Borough locations used in the movie?

It is no surprise that this area is frequently used by filmmakers given its proximity to London and with Pinewood and Shepperton Studios just 20 minutes away. Bray is the home of Bray Film Studios, made famous in the 1950s and 1960s by the Hammer House of Horror Productions including Dracula. In 1979 it was where Alien was made.

TRAVEL BY COACH TO VIEW:

Maidenhead High Street and Maidenhead Town Hall – used as the hospital location in Carry On films from 1963 to 1975.

Bray village – St Michael's Church and The Crown pub – used in an episode of Inspector Morse.

Bray High Street – used in an episode of Midsomer Murders – Bring out Your Dead.

Travel on by coach past **Bray Film Studios** with commentary about the history of the studios, the films shot there and the plans for the site today.

Royal Windsor Racecourse – location used in Suffragette and Midsomer Murders.

Continue on route to Dorney Court passing Eton College. Possible stop for photo opportunity outside Founders Yard.

Eton College – used as a location including: A Tale of Two Cities, Chariots of Fire, The Fourth Protocol, Inspector Morse, The Madness of King George, Shakespeare in Love, Casino Royale.

THE OLD COURT

The Old Court is a hothouse for movies, live music, theatre, dance and exhibitions. The quirky Grade II listed building originally housed Windsor's police station, magistrates' court and fire station from 1907 to 1966.

CONTEMPORARY ART FAIR WINDSOR

The Fair in November gathers over 150 artists, printmakers, photographers, sculptors, ceramicists and galleries from the UK and Europe. It hosts workshops and demonstrations from leading artists and galleries.

WINDSOR FESTIVAL

Amongst the premier music and arts festivals in the UK. It takes place over two weeks each September and performances are located in some stunning local venues including St George's Chapel and the Waterloo Chamber, Windsor Castle (see picture on page 3).

WINDSOR FRINGE

Windsor Fringe takes place each September/October with an eclectic mix of the arts and entertainment.

ETON HIGH STREET

Distinctive gift shops nestle amongst traditional and modern art galleries, antique shops, fashion boutiques and historic tailors. There are many al fresco cafes, and first class restaurants.

If you have a small tour you could take a look at...

ETON COLLEGE MUSEUMS

Sundays (2.30-5pm) Eton College opens the doors of three museums: The Natural History Museum, The Museum of Antiquities and The Museum of Eton Life, which brings alive various aspects of the Eton experience across six centuries.

WINDSOR & ROYAL BOROUGH MUSEUM

Bursting with interesting facts and interactive displays on the Royal Borough and its residents, including a model of a Hawker Hurricane, the plane designed by Windsor-born Sir Sydney Camm. Guided tours may be available of Windsor Guildhall where portraits of monarchs adorn the walls.



Arrive **Dorney Court** for private Connoisseur's Tour of House and adjacent church. Tour can be tailored to focus on the film locations, scenes shot there and the actors who have been there. Used as a location in: The Missionary, Sense & Sensibility, Elizabeth, Sliding Doors, Lock, Stock and Two Smoking Barrels, To Kill a King, The Other Boleyn Girl, Cranford, Midsomer Murders, Elizabeth: The Golden Age, The Social Network.

Drop off at Windsor Coach Park then Film & TV walking tour of Windsor & Eton with stop off afternoon tea at The Windsor Guildhall.

Please see the directory for tour guides who can provide the commentary and guides for the coach and walking tour.

There are more themes and more detailed itineraries available, including Bookable Experiences & Activities, on the Itineraries section of the website windsor.gov.uk/travel-trade/itineraries



COUNTRYSIDE, PARKS AND GARDENS

The phrase ‘England’s green and pleasant land’ could have been written for the beautiful countryside surrounding the Royal Borough of Windsor & Maidenhead. With more than 1,000 acres of National Trust land and 4,800 acres of Crown Estate there is so much to explore.

There is a garden to enjoy for every season: daffodils and bluebells at Dorney Court in springtime, the abundance of summer flowers at Cliveden, and the flaming autumn colours in The Savill Garden.



DORNEY COURT, DORNEY, NEAR WINDSOR

Surrounded by mature parkland and gardens including the English Rose Garden and the Dell with its sumptuous array of daffodils, bluebells and snowdrops in the spring. Combine a visit to the Gardens with a tour of the Tudor manor house, home to the same family for over 450 years.

CLIVEDEN NATIONAL TRUST, NEAR MAIDENHEAD

Enjoy the beautiful views and follow miles of woodland paths. It offers a multitude of experiences from the Long Garden with its floral displays to the tranquil and relaxing Water Garden and the Rose Garden with more than 900 roses to admire.

THE RIVER THAMES AND THAMES PATH NATIONAL TRAIL

The River Thames is such a big part of the landscape as it flows through the Royal Borough. Why not walk along the river following the Thames Path National Trail starting from Windsor & Eton Riverside train station. Or try a sightseeing cruise with French Brothers from Runnymede through the “back garden” of Windsor Castle with views of the Castle, Royal Farm and Queen Adelaide’s Cottage.

-
- 01 The Long Walk, Windsor Great Park
 - 02 The Savill Garden
 - 03 Queen Elizabeth II’s Jubilee Statue looking towards Windsor Castle
 - 04 Cascade waterfall at Virginia Water
 - 05 Eton Mess at The Boatman
 - 06 The Windsor Grill



Exclusive Opportunity

THE SAVILL GARDEN & ROYAL HERITAGE COACH TOUR (1-1.5HRS)

Be fully immersed in 1,000 years of royal history with an escorted coach tour of Windsor Great Park personally guided by one of The Crown Estate's dedicated team.

Sights include: Coronation Groves, The Deer Park, Royal Equestrian Statues (including the Jubilee Statue, the only sculpture of Queen Elizabeth II on horseback to mark her Golden Jubilee), The Guards Polo Club, The Royal School, The Estate Village and disembark from your coach at the top of the iconic Long Walk, giving you time to take a photo towards Windsor Castle from The Copper Horse statue of George III.

Available: 1 Apr–30 Sep. Mon to Fri only. Min 20/Max 55.

THE SAVILL GARDEN

A hidden gem in the heart of Windsor Great Park and described as Britain's finest ornamental garden. Commissioned by George V, the Garden has many Royal connections such as the Golden Jubilee Garden and the Rose Garden opened by Queen Elizabeth II in 2010. With seasonal displays in beautifully themed landscaped areas, groups can wander its paths and gaze at the magnificent trees, flowers and rare plants.

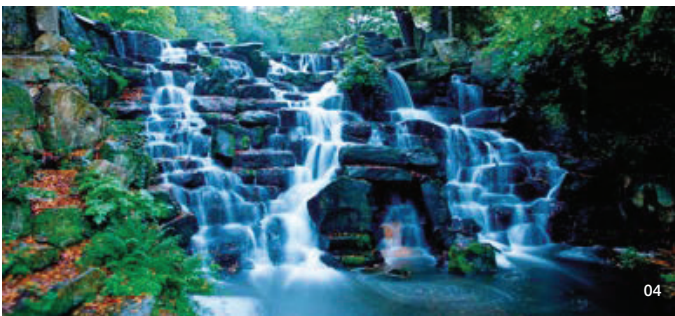
WINDSOR GREAT PARK

A must when visiting Windsor with its sweeping historic parkland, ancient woodland and award-winning gardens. The Great Park stretches for 5 miles towards Virginia Water.

TAKE A WALK IN THE GREAT PARK FROM THE SAVILL GARDEN

The Great Park offers plenty of great ideas for walks. Park at The Savill Garden and choose from one of these:

- Walk to the Copper Horse (just over 3.5 miles). Walk to the top of the historic Long Walk and the Copper Horse. Take in the impressive views of Windsor Castle. Return the same way or if the group enjoy the challenges of off-road hillwalking, the ancient forest of the Deer Park offers a route through stunning woodland.
- Walk to the Valley Gardens (1.7 miles). A short walk to the northern shore of Virginia Water and the picturesque Valley Gardens - with 250 acres of landscaped blooms, and twisting woodland trails that offer their own unique views of the great lake.
- A Lakeside Walk from Savill Gardens to Virginia Water (5.1 miles). Experience the impressive heights of the Cascade to the ancient Leptis Magna ruins, as you walk to and around Virginia Water.



FOODIE DELIGHTS

The Royal Borough of Windsor and Maidenhead is full of exciting places to eat and drink. From Michelin star restaurants such as Heston Blumenthal's Fat Duck in Bray to riverside pubs such as **The Boatman** in Windsor. An excellent mix of familiar and independent means that there is a restaurant for everyone to enjoy.

Enjoy a sumptuous afternoon tea in one of the central hotels such as **The Castle Hotel** and **The Macdonald Windsor**. Visiting The Savill Garden choose from **The Savill Garden Kitchen** or **The Gallery Café** at the Visitor Centre.

Restaurants such as **The Windsor Grill**, famed for its beef, **Gilbey's Bar & Restaurant** with its modern British menu and **The Flaming Cow** with its authentic American food, are just some of the many great restaurants in Windsor and can accommodate groups. **Patch on the Plaza** is a brand-new, al fresco bar and restaurant close to Windsor & Eton Central station. Or stop off for an ice cream to end your visit at **Fortescues of Windsor**, a family-run gelato and coffee shop with a royal menu of desserts fit for the King.

Who doesn't want to enjoy a pint of traditional British beer? **Windsor & Eton Brewery** offers tours and beer sampling for groups. Try one of their award-winning beers with a fish 'n' chip lunch or a tailored two-course option such as Cottage Pie.

Those with a sweet tooth should include a visit to **Dr Choc's Windsor Chocolate Factory** where delicious chocolate can be enjoyed. Or why not book one of the workshops and learn how to make chocolate and eat it afterwards!

ETON MESS

First mention of 'Eton Mess' as an English dessert was in 1893. The strawberry-and cream dessert is traditionally served at Eton College on 4 June at the annual cricket match against the pupils of Harrow School. Sample it at **The Eton Mess**, named after the famous dessert or **The Boatman**.



48 HOURS IN WINDSOR & ETON

The town of Windsor is considerably older than the Castle. It dates from the 7th century with royal ownership probably from the 9th century. Eton sits on the opposite bank of the River Thames from Windsor and is connected by a footbridge



DAY 1 AM EXPLORE THE TOWN

Windsor Guildhall

Designed by Sir Thomas Fitz and built in 1691. Watch the Changing of the Guard from here.

Windsor & Eton Central Station

As well as the station it is home to Windsor Royal Station; fabulous shopping and eating in the heart of Windsor.

Golden Tours Hop-on Hop-off Open Top Tour of Windsor

24-hour hop-on, hop-off ticket covers 11 stops along the route through Windsor, Eton and Datchet.

DAY 1 PM VISIT THE Castle

Henry VIII Gateway

The symbolic link between Castle and town. Henry VIII built his gateway in about 1511.

Queen Victoria Statue

The statue was presented to the town to mark her Golden Jubilee in 1887. Windsor Castle was a favourite residence of Queen Victoria.

Windsor Castle

The family home to British kings and queens for over 1,000 years and today one of the official residences of His Majesty The King.

The size of the Castle (over 10.5 hectares) is breathtaking, in fact it is the largest and oldest occupied castle in the world and it's where Queen Elizabeth II chose to spend most of her private weekends.

Attend Evensong at St George's Chapel

The service lasts approximately 45 minutes, sung by the Chapel Choir. 5.15pm (sung daily except Wed).

Evening Entertainment

Theatre Royal and The Old Court Arts Centre.

GUIDED WALKING TOURS

Book with: Windsor Tourist Guides Ltd, Visions of History, WE Tourist Guides or Spirit of England Tours.

LUNCH STOP

Windsor

Windsor Grill – Famous for its steak, a short stroll from the Castle. Max 50.

Eton

Gilbey's Bar & Restaurant – Serves a Modern British menu. Group bookings up to 60.

The Eton Mess – restaurant and bar in the centre of Eton. Max group size 20.

The Flaming Cow – American-style diner restaurant. Max group size 20.

DAY 2 EXPLORE ETON AND BEYOND

The Eton Walkway

A 2-mile, circular walking tour connecting Eton College and 18 points of interest celebrating Eton's rich heritage. Free guides are available from the Visitor Information Centre.

The Herschel Observatory, Eton

Sir William Herschel, King George III's astronomer, correctly described the spiral structure of our Milky Way Galaxy. He lived in Datchet, Old Windsor and Slough.

Dorney Court, Dorney

The estate has been the home of the Palmer family for over 450 years. It is a Grade 1 listed building. Private group visits are available. Max 60.

Afternoon Tea Cruise and Maidenhead Heritage Centre

Take a French Brothers Lunch or Afternoon Tea Cruise to Maidenhead and visit the Maidenhead Heritage Centre. Fly their amazing Spitfire flight simulator.

ADD A SPECIAL TOUR:

Frogmore House – Surrounded by gardens, the house (1680s) was purchased for Queen Charlotte in 1792. Private pre-booked Guided Tours for groups in August.

Windsor Castle – Fire and Restoration: Learn more about the devastating fire of 1992 and the Castle's restoration.



ACCOMMODATION

In Windsor

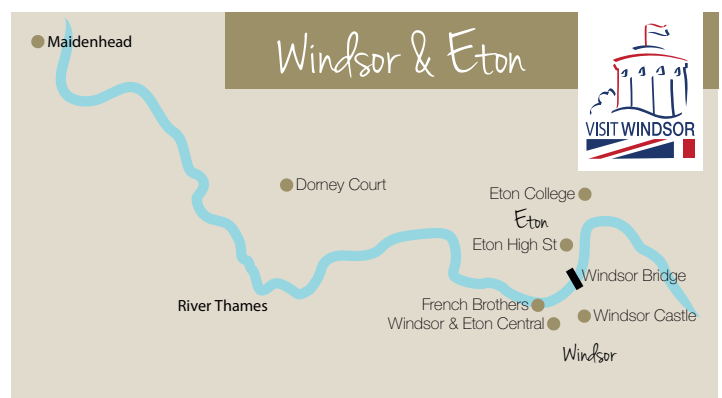
Castle Hotel – Georgian boutique hotel, opposite the Castle, with a rich and fascinating history.

Near Heathrow

Holiday Inn Express T5 Heathrow – 3.8 miles, 11 mins.

Mercurie London Heathrow – 8.6 miles, 18 mins.

01 Castle Hotel
02 Eton College



LUXURY & UNIQUE EXPERIENCES

Combine a stay in an elegant hotel with superb shopping, fine dining, excellent evening entertainment and a selection of luxury or unique experiences around the Royal Borough.

OLD BUTCHER'S WINE CELLAR WINE TASTINGS, COOKHAM

The 'Old Butcher's' name originated from the premises, a 17th-century, Grade II listed building. This was originally the village butchers and abattoir. The Wine Bistro's menu includes mini sausages and Scotch eggs, as well as classic platters of artisan English cheese and charcuterie. Sample some English sparkling wines as part of a wine tasting. Max group 25.

STEAM DREAMS – A STYLISH WAY TO TRAVEL TO AND AROUND THE ROYAL BOROUGH

Book luxurious Pullman Style Dining, with a Champagne Brunch served in elegant carriages, transporting guests back to the golden age of steam travel. Combine this with The Royal Windsor Steamboat Express, a one-hour steam boat cruise, and it's a true 'Steam Dream' experience. Start at London Victoria, where a complete carriage can be booked for 42 people in Pullman Style and enjoy passing many famous landmarks on the way to Windsor. Then it's a short walk from Windsor & Eton Riverside Station along the Promenade to join one of the luxury 100-year-old genuine coal-fired steamboats, built in 1898 and 1905. Advance bookings and group rate for 20+.

GUARDS POLO CLUB - HALF-DAY POLO MASTERCLASS (THREE HOURS)

A thorough introduction to every aspect of polo, from theory to practice - get up and running and hit a polo ball within one session. Gain an insight into the world of modern polo including its rich history, the fundamentals of polo riding, and a fun and pro-active exercise in polo practice from a sporting perspective. All lessons include access to Guards Polo Club on the day. Available for individuals or groups up to 50.

PRIVATE GUIDED EVENING TOURS OF WINDSOR Castle

For an experience groups won't forget, enjoy a glass of champagne and take a private tour of the State Apartments at Windsor Castle with an expert guide after hours. Private Guided Tours (2.5 hours) are for pre-booked groups of 15-60 only.

UNIQUE ACCOMMODATION

Choose luxurious accommodation with historic connections...



03

FAIRMONT WINDSOR PARK, ENGLEFIELD GREEN

Formerly a private home at the beginning of the 19th century, a total rebuild has taken place respecting the traditional exterior of Jacobean architecture. The hotel is surrounded by 40 acres of open green space featuring a tranquil lake, luxurious Spa & Wellness facilities and a wealth of activities within the grounds.

CLIVEDEN, NR MAIDENHEAD

One of the world's finest luxury hotels, this grand stately home is surrounded by 376 acres of magnificent formal gardens and parkland. Enjoy fine dining or a spa treatment. Guests have included British monarchs as well as Charlie Chaplin, Winston Churchill, Harold Macmillan and President Roosevelt.

GREAT FOSTERS, EGHAM

Probably built as a Tudor royal hunting lodge and gracing an estate of more than 50 acres of stunning gardens and parkland, in what was once the heart of Royal Windsor Forest. Steeped in royal history, located just 7 miles from the centre of Windsor. In its time, the hotel has played host to an eclectic array of guests, including the likes of Orson Welles and Charlie Chaplin.

COWORTH PARK

Coworth House was built in 1776 for a prosperous East India merchant. The Prince and Princess of Wales – the future Edward VII and Queen Alexandra – stayed here when they attended the races at nearby Ascot. In 1899 the house was bought by Lord Stanley, the future 17th Earl of Derby. He was a keen horseman who won the Derby several times. Indeed, the famous race is named after his ancestors.



01

01 Old Butcher's Wine Cellar wine tastings

02 Guards Polo Club

03 Coworth Park



02

DIRECTORY

THINGS TO SEE & DO

We hope we've provided inspiration for your tours in the previous pages of this guide.

To help you create your itineraries, the Directory section offers more detailed information on the products that have been included with contact details and specific travel trade information.

Take a look at the Travel Trade portal at windsor.gov.uk/travel-trade, where you will find more detailed itineraries. Sign up for the Travel Trade Enewsletter for the latest updates and link to the Royal Borough Image Bank for beautiful royalty-free imagery.

Where something has been marked in bold in the editorial section, you will be able to find a listing for it within the Directory.



01 Theatre Royal Windsor



ROYAL WINDSOR
INFORMATION CENTRE

Needing help to plan your group's itinerary or book accommodation?

Visit our information team in their new home within the Windsor & Royal Borough Museum at the Windsor Guildhall. Offering tickets for attractions and events, maps, guidebooks, souvenirs, travel advice, accommodation booking, meeting & event venues and more. Plus you can now explore the museum and discover more of the Royal Borough's incredible past free of charge!

To book tickets or buy guidebooks and souvenirs online go to tickets.windsor.gov.uk

Open: Wednesday to Sunday from 10:00 to 16:00
Windsor Guildhall, High Street, Windsor, SL4 1LR

GENERAL ENQUIRIES:

Tel: +44 (0)1753 743900
windsor.tic@rbwm.gov.uk

ACCOMMODATION BOOKING:

Tel: +44 (0)1753 743907
windsor.accommodation@rbwm.gov.uk

Ascot Carriages

Englefield Green TW20 0UJ
Joanna Buick 07811 543019
info@ascotcarriages.co.uk
ascotcarriages.co.uk

Scenic Horse-drawn Carriage
Tours of Windsor Great Park
from The Savill Garden.



Experiences: Driver Guide Tours.

Open: All year selected dates, Not open Sun or BH.

⌚ 0.5-1 | 🚶 Max 4 | 🚗 Egham 3.2mls | 🚗 Yes £

Escape in 60 Windsor Escape Rooms

Windsor SL4 5JB
Kathryn Browne 01753 396322
info@escapein60windsor.com
escapein60windsor.com

Discover three Escape rooms:
Escape the Castle, The Curse
of the Lost Chamber and The
Amber Room.



Open: Daily.

⌚ 1.5 | 🚶 2-10 | TO% | TL | 🚗 W&E Central 0.5mls | 🚗 WCP

Ascot Racecourse

Ascot Racecourse
Daniel Gauld 0344 346 3000
groups@ascot.com
ascot.com

One of the world's most
famous and best-loved
racecourses. Racedays are
stylish social events.



Experiences: Bespoke group requests.

Open: Various dates throughout the year.

⌚ 5 | TO% | TL | 🚗 Ascot 0.43mls | 🚗 Yes £

French Brothers Boats

Windsor SL41QX
Don Yates 01753 851900
don@frenchbrothers.co.uk
frenchbrothers.co.uk

Public sailings from Windsor
Promenade incl. regular
40-minute round trips and
from Maidenhead, as well as
historic Runnymede.



Experiences: Book a lunch or afternoon tea cruise.

Open: All year for groups and charters.

⌚ 1.5-2 | 🚶 20-150 | TO% | TL | 🚗 Cent/Riverside 0.2mls | 🚗 WCP

Cliveden National Trust

Nr Maidenhead SL1 8NS
cliveden@nationaltrust.org.uk
nationaltrust.org.uk/cliveden

Follow in the footsteps of dukes,
earls, kings and queens as you
stroll through impressive formal
gardens and woodland with
far-reaching views across the
Thames. Pre-booked groups only.



Experiences: Historic house visits when available and bookable boating
trips in various craft on the River Thames. **Open:** All year.

⌚ 2-3 | 🚶 15+ | TO% | D/TL | 🚗 Taplow 3.2mls | 🚗 Yes

Dorney Court

Nr Windsor SL4 6QP
James Palmer 07769 970854
jrdpalmer@gmail.com
dorneycourt.co.uk

'One of the finest Tudor Manor
Houses in England' - Country
Life. Noted for its outstanding
architectural and historical
importance. Home of the
Palmers for over 450 years.



Experiences: Historic House - Tours. Private tours by appointment.

Open: May Bank Holiday and August. Afternoons 12.30-4pm.

⌚ 1.5 | 🚶 20+ | D/TL | 🚗 Taplow 2mls | 🚗 Yes

Guards Polo Academy

Ascot SL5 7SE
Ebe Siewwright 07470 092251
ebe@guardspoloacademy.com
guardspoloclub.com/academy

A thorough introduction to
every aspect of polo, from
theory to practice - hit a polo
ball and ride a horse (no
experience necessary) within
one session. For groups or
individuals.



Experiences: Includes access to Guards Polo Club. **Open:** All year.

⌚ NA | 🚶 50 | TO% | 🚗 Sunningdale 2.1mls | 🚗 Yes

Dr Choc's Windsor Chocolate Factory

Windsor SL4 1PL
Ramnik Mathur 07723 368242
ramnikmathur@gmail.com
drchocs.com

Chocolate Workshops - Creating
three bars of chocolate to take away!
Enjoy a drink and cake in the café
upstairs, explore the chocolate shop.



Experiences: Chocolate tasting. Creating three bars of chocolate,
bonbons and chocolate-dipped fruits to take away. **Open:** All year.

⌚ 1 | 🚶 30 | TO% | TL | 🚗 W&E Central/Riverside 0.2mls | 🚗 WCP

LEGOLAND WINDSOR RESORT

Windsor SL4 4AY
Laura Storey 07740 433169
laura.storey@legoland.co.uk
legoland.co.uk

LEGO-themed resort theme park
with two on-site themed hotels,
targeting families with children
aged 2-12. Over 40 rides and
attractions.



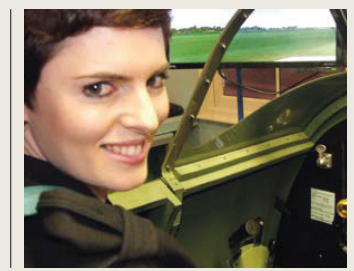
Open: Check closed periods during Jan, Feb Mar, Nov.

⌚ NA | 🚶 24-48 | TO% | 🚗 W&E Central 2.6mls | 🚗 Yes

Maidenhead Heritage Centre

Maidenhead SL6 1SL
Alan Mellins 01628 780555
info@maidenheadheritage.org.uk
maidenheadheritage.org.uk

History of Maidenhead and
surroundings, from the stone
age to the 20th century and
the Air Transport Auxiliary collection
from WWII.



Experiences: Fly Spitfire flight simulator.

Open: Tue-Sat 10-4, potential private opening for groups.

⌚ 1-2.5 | 🚶 NA | TO% | D/TL | 🚗 Maidenhead 0.mls | 🚗 No

The Savill Garden

Windsor TW20 0UJ
Helen Buckham 07917 918646
helen.buckham@thecrownestate.co.uk
windsorgreatpark.co.uk

Recognised as one of the finest woodland gardens in the country, The Savill Garden is a hidden gem in the heart of Windsor Great Park with decades of royal history to discover.



Experiences: Additional walks and tours, restaurant, café and gift shop.

Open: All year.

⌚ 2.5 | 🚶 10-50 | D/TL | 🚗 Egham 3.2mils | 🚗 Yes Free with paid visit

The Old Court (Artspace)

Windsor SL4 3BL
Martin Denny 01753 911333
martin@oldcourt.org
oldcourt.org

A vibrant arts centre with live music, film, comedy, dance, theatre, and a bar in the former Edwardian Magistrates' Court, Police and Fire Station.



Experiences: Live events and cinema. Private parties.

Open: Mon-Fri 11am-10pm, Sat and Sun 10am-11pm.

⌚ 2 | 🚶 250 | TL | 🚗 W&E Central 0.9mils | 🚗 WCP

The Stanley Spencer Gallery

Cookham SL6 9SJ
01628 531092
info@stanleyspencer.org.uk
stanleyspencer.org.uk

Art Gallery in Cookham dedicated to Stanley Spencer's works, many of which were inspired by the village.



Experiences: Guided tour visiting scenes from paintings.

Open: Apr-Oct, Daily 10:30-5:30, Nov-Mar 11-4:30 Thu & Sun.

⌚ 1 | 🚶 20 | TL | 🚗 Cookham 0.6mils | 🚗 No

Runnymede National Trust

Near Old Windsor, Surrey, SL4 2JL
(SatNav: TW20 0AE)
01784 432891

runnymede@nationaltrust.org.uk
nationaltrust.org.uk/runnymede-and-ankerwycke

National Trust countryside, woodlands, with memorials, art and tea-room.



Open: All year, except Christmas Eve and Christmas Day.

⌚ 2 | 🚗 Egham 1.1mils | 🚗 £ | 🚗 Pre-book

Norden Farm Centre for the Arts

Maidenhead SL6 4PF
Alex Vander Borgh 01628 682556
alex.vanderborgh@nordenfarm.org
nordenfarm.org

Arts centre - featuring a 220-seat theatre, cinema, 100-seat studio, gallery, event and meeting spaces, a café bar.



Experiences: Historic Grade II listed Barn for catering 40+.

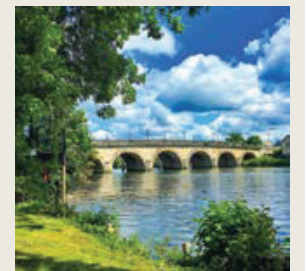
Open: Tue-Sat 11-10pm. Hire Sun-Mon.

⌚ 2-3 | 🚗 Maidenhead 1.7mils | 🚗 No

Thames Path National Trail

River Thames
Thames.Path@Oxfordshire.gov.uk
nationaltrail.co.uk/en_GB/trails/thames-path/

A long-distance walking trail, following England's best known river for 184 miles from its source in the Cotswolds through several rural counties and on into London.



Open: All year - check for flooding.

Private Boat Hire

Windsor & Maidenhead
Will Harris 07977 448117
office@privateboathire.co.uk
privateboathire.co.uk

Six luxury skippered small passenger boats (up to 12). Enjoy the beautiful River Thames with a picnic or visit a local riverside restaurant.



Experiences: Wine tasting, Blue badge guides.

Open: All year, primarily Mar-Nov.

⌚ 2-4 | 🚶 2-36 | TO% | TL | 🚗 Various | 🚗 Yes

Theatre Royal Windsor

Windsor SL4 1PS
01753 853888
boxofficesales@theatreroyalwindsor.co.uk
theatreroyalwindsor.co.uk

Grade II listed local theatre, providing a mixture of theatrical, live music and stand up comedy. Best known for annual pantomime.



Experiences: Theatre, behind-the-scenes tour.

Open: All year.

⌚ 2-3 | 🚶 11+ | TL | 🚗 W&E Riverside 0.1mils | 🚗 WCP

Tootbus

Jews Row, London, SW18 1TB
Andrea Hamilton 07773 245680
andrea.hamilton@tootbus.com
tootbus.com

Climb aboard at any of the stops and let us guide you across both areas separated by the River Thames. Explore the main sights both sides of the river.



Experiences: Buses on Private Hire.

Open: Apr-Sep daily, Oct-Mar Sat/Sun only 10-4.

⌚ | 🚶 30-55 | TO% | TL | 🚗 Various | 🚗 WCP

Key: ⌚ Avg Time 🚶 Min/Max TO% Tour Operator Discount D/TL Driver/Tour Leader FOC
🚗 Railway 🚗 Car/Coach Parking £ Chargeable WCP Windsor Coach Park

Royal Windsor Racecourse

Windsor SL4 5JJ
Angus Jones 07585 115783
ajones@windsor-racecourse.co.uk
www.windsor-racecourse.co.uk
Set in 165 acres of Berkshire countryside and riverside. Perfect for race days, events and venue hire.



Open: All year.

⌚ 5 | 🚶 W&E Central 1.5mils | 🚗 🚘 Yes

Windsor & Eton Brewery

Windsor SL4 1SE
Paul O'Connell 07773 369004
paul.oconnell@webrew.co.uk
webrew.co.uk

A local craft brewery, large shop and purpose-built tap room. Beers have won international, national and local awards. Public brewery tour every Sat.



Experiences: Brewery tour and beer tasting.

Open: All year Mon-Sat (check BHs).

⌚ 1-2 | 🏠 20-60 | TO% | TL | 🚶 W&E Central 0.4mils | 🚗 🚘 WCP

Windsor Royal Station

Windsor SL4 1RH
Caron Cole 01753 797070
caron.cole@eu.jll.com
www.windsorroyalstation.co.uk
Cafés, restaurants and shops set in the old royal station.



Open: We are open all year (excl. Christmas Day).

⌚ 1-2 | TO% | 🚶 W&E Central (on site) | 🚗 No | 🚘 No WCP

Windsor Carriages

Windsor SL4 1ER
Rebecca Seear 01753 981980
info@windsorcarriages.co.uk
www.windsorcarriages.co.uk

Private horse and carriage hire at Windsor Castle including The Long Walk. Combine with local venue pick up and drop off.



Experiences: Private guided tours of Windsor Great Park.

Open: All year round.

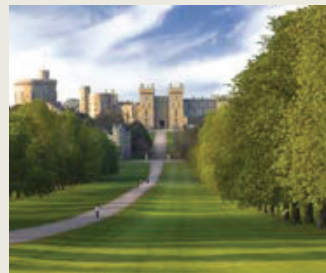
⌚ 0.5 | 🏠 6 | TO% | TL | 🚶 W&E Central 0.3mils | 🚗 🚘 WCP

Windsor Castle - Royal Collection Trust

Windsor, Berkshire, SL4 1NJ
Iain Terry 020 7024 5777
traveltrade@rct.uk
rct.uk

Windsor Castle is an official residence of His Majesty The King.

Photographer: Edward Staines. Royal Collection Trust / © His Majesty King Charles III 2022



Experiences: Self-guided tours, themed talks and private evening tours.

Open: All year round.

⌚ 2-2.5 | 🏠 Min 15 | TO% | 🚶 W&E Central 0.3mils | 🚗 🚘 WCP

Windsor & Maidenhead Boat Company

Bray SL6 2ED
Gareth Pugh 01628 621286
gareth@wmbcboats.com
wmbcboats.co.uk

Cruise offering departs from Maidenhead (advance booking only). Options: lunch, afternoon tea and dinner. Or book the whole boat for your group.



Experiences: Local gin, beer, cheese and wine tastings.

Open: All year, check Oct/Nov.

⌚ | 🏠 80 | TO% | D/TL | 🚶 Maidenhead 2.3mils | 🚗 🚘 No

THERE'S PLENTY MORE TO DO FOR GROUPS AND INDIVIDUALS

CANOE & KAYAK ADVENTURES
canoeandkayakadventures.co.uk

ESCAPE EXPERIENCE WINDSOR
www.escapewindsor.co.uk

WINDSOR DUCK TOURS
www.windsorducktours.co.uk

WINDSOR FARM SHOP
www.windsorfarmshop.co.uk

GOLDEN TOURS WINDSOR
www.goldentours.com

goldentours.com/london-hop-on-hop-off-bus-tours/hop-on-hop-off-open-top-tour-of-windsor

JOHN LOGIE MOTOR BOATS
johnlogiemotorboats.com

KRIS CRUISERS
www.kriscruisers.co.uk

BRAY LAKE WATERSPORTS
www.braylake.com

SEGWAY EVENTS
segwayevents.co.uk/locations/windsor-bray-lake-watersports

EXTREME MOTION
extrememotion.com/cycle-hire

DIRECTORY

PLACES TO EAT & DRINK

Dining out in the Royal Borough of Windsor & Maidenhead is a highly rated and most delightful experience. There's a wide range of restaurants, pubs, bars and cafés to choose from. Of course, many of the hotels offer fine dining and traditional British afternoon tea including: Cliveden House, Fairmont Windsor Park, Great Fosters, Hurley House, Macdonald Berystede, Macdonald The Compleat Angler.

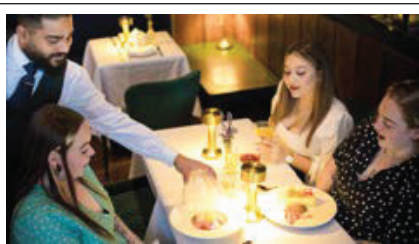


Bel & The Dragon

Cookham SL6 9SQ
Rosie Gillham 0208 078 1128
rosie.gillham@belandthedragon.com
belandthedragon-cookham.co.uk

One of the oldest coaching inns in England, a short stroll from the Thames Path. Modern British Cuisine. Min/max 10-82.

🍷 NA | TO% | ● | 🚶 Cookham 0.6mils | 🚗 Nearby £



The Eton Mess

Eton SL4 6BL
Jon Hilton 01753 865516
gm@theetonmess.co.uk theetonmess.co.uk

Boutique hotel (5 rooms), restaurant & bar in the heart of Eton. Open Wed/Thu from 6pm, Fri-Sun from 12pm. Tasting classes (cocktail, rum, whiskey etc.).

🍷 12-30 | TO% | ● | 🚶 W&ERiversid | 🚗 WCP



Old Butcher's Wine Cellar

Cookham SL6 9SQ
01628 819027
sales@oldbutcherswinecellar.co.uk
oldbutcherswinecellar.co.uk

17th-century, Grade II listed building, originally the village butchers. Sample wines and a locally-sourced menu with artisan English cheese and charcuterie. Max 25.

🍷 NA | TO% | ● | 🚶 Cookham 0.6mils | 🚗 Nearby £



Bel & The Dragon

Windsor SL4 1QB
Rosie Gillham 0208 078 1128
rosie.gillham@belandthedragon.com
belandthedragon-windsor.co.uk

The historic restaurant and tea room has been serving food and drink since the 11th century. Min/Max 10-110.

🍷 NA | TO% | ● | 🚶 Windsor & Eton 105ft | 🚗 No WCP

Flaming Cow

Eton SL4 6BT
Shelby Wildon 01753 863379
rm@flamingcow.co.uk flamingcow.co.uk

American-style diner restaurant in the heart of Eton: epic burgers, hot dogs, fries, ribs, wings, milkshakes, cocktails, speciality beers.

Fortescues Of Windsor

Windsor SL4 1PE
Joannie Peak 07971 243949
jopeak@mail.com www.windsor.gov.uk/
food-and-drink/fortescues-of-windsor-p1855711

Family-run Gelato and Coffee shop next to the Castle.



Windsor & Eton Brewery

Windsor SL4 1SE
Matt Tungate 01753 392495
Unit4@webrew.co.uk webrew.co.uk

As well as beer tours enjoy lunch in the taproom where we can cater for group meals e.g. fish 'n' chips or a 2-course meal with a glass of beer or soft (Max 120 seated).

🍷 | TO% | ● | 🚗 No WCP



The Boatman

Windsor SL4 1QN
01753 620010
boatmanwindsor@slhuk.com
boatmanwindsor.com

Historic riverside pub in the shadow of Windsor Castle. British favourites such as beer-battered fish and chips and Eton Mess. Max 80.

🚶 Windsor & Eton Riverside 213ft | 🚗 No WCP



Gilbey's Bar & Restaurant

Windsor SL4 6AF
Emma Brett 01753 854921
eton@gilbeygroup.com gilbeygroup.com

Situated on the High Street of Eton. Open 12pm for lunch, 6pm for dinner every day. Enjoy the stunning Conservatory Restaurant or cosy Front Bar and 2 private dining rooms. Has 4 guest bedrooms. Max 120.

● | TL | 🚗 No WCP



Windsor Grill

Windsor SL4 3BX
01753 859658
info@windsorgrill.co.uk windsorgrill.co.uk

Quirky and historic restaurant, short stroll from Windsor Castle. Enjoy a 28-day aged Surrey Farm Beef (steak is what we are famous for), along with meat and seafood specials, seasonal favourites.

🍷 NA | ● | 🚗 No WCP

Key: 🍷 Group Rates TO% Tour Operator Discount ● Free Places 🚶 Railway 🚗 Car/Coach Parking

DIRECTORY

TOUR GUIDES

Book a local guide to discover hidden stories. They offer walking tours, themed tours, visits to museums and galleries including Windsor Castle and escorted coach tours. Or book your clients on a local tour.

All the guides listed here are Blue Badge Guides who are trained under the auspices of The Institute of Tourist Guiding. A wide spectrum of academic, specialist and practical training is provided, as well as a core curriculum of the history, architecture and social development of the country.

SUGGESTED WALKING TOURS



WINDSOR & RUNNYMEDE WITH VISIONS OF HISTORY

Join Tony on an escorted coach and walking tour of Windsor & Runnymede and see how he brings history to life. The meadows at Runnymede are the site of the sealing of Magna Carta and now home to monuments and artworks.

INFORMATIVE AND FUN TOURS WITH WE TOURS

Join Debbie or Bobbie for an informative and fun tour and they might just add a touch of drama to your visit! They've also published a book called "Windsor, A History and Celebration".

AWARD-WINNING TOURS WITH WINDSOR TOURIST GUIDES LTD

Join Amanda or one of her fellow guides on a private guided tour of Windsor Castle or evening guided town walks. All the walks are tailor-made to your group's interests.

EXPLORE WINDSOR & ETON WITH SPIRIT OF ENGLAND

Enjoy a guided tour of Windsor Castle and St George's Chapel, then explore the beautiful towns of Windsor and Eton nestling close to the walls of Windsor Castle.

Key: 🏠 Group Rates

Spirit of England Tours

Laura Comley-Smith
07984 013532
laura.comley-smith@talk21.com
spiritofengland.net

Evening walks of Eton and Windsor, guided cycling tours in Windsor Great Park (up to 10), The Savill Garden, coach tours and themed talks.



Type: Guiding Services | Open: All year | 🏠 Per Tour

Visions of History

Tony Howe 07768 426443
tony@visionsofhistory.co.uk
www.visionsofhistory.co.uk

Blue Badge Tourist Guide offering walking tours of Windsor Castle, Windsor and Eton Towns, Runnymede (Magna Carta) and the local area.



Type: Guiding Services | Open: All year

WE Tourist Guides

Deborah Keenan MITG
07941 166547
Debskeenan@gmail.com
windsoretontour.com

Experienced Blue Badge Tourist Guides. We offer tours in Windsor, Marlow, Henley and Midsomer Murders country.



Type: Guiding Services | Open: All year | 🏠 Per Tour

Windsor Tourist Guides Ltd

Amanda Bryett 07799 891578
abryett@windsortouristguides.co.uk
www.windsortouristguides.co.uk

Professional Blue Badge Tourist Guides for private guided tours of Windsor, Windsor Castle and St George's Chapel and evening tours.

D/TL - town walking tour yes
Windsor Castle no
🏠 W&E Central and Riverside



Type: Guiding Services | Open: All year | 🏠 £195 per tour

DIRECTORY

PLACES TO STAY

The Royal Borough offers a variety of accommodation to suit all tastes: from 5-star resorts, country house hotels with historic connections, riverside hotels, hotels close to Heathrow Airport, boutique bed and breakfasts, apartment hotels and self catering.

INDULGE YOURSELF WITH A ROYAL WINDSOR AFTERNOON TEA WITH A TWIST.

Many of these hotels offer Afternoon Tea including:

CASTLE HOTEL -

Afternoon Tea in Leaf Restaurant and Lounge

COWORTH PARK -

Old English Afternoon Tea

CLIVEDEN -

Champagne Afternoon Tea

GREAT FOSTERS -

Served in the historic Anne Boleyn drawing room

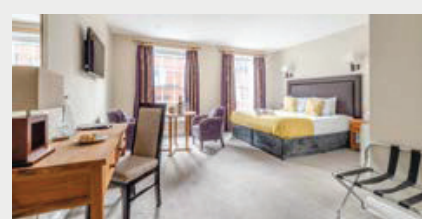


The Christopher

Boutique Hotel Eton SL4 6AN
marketing@thechristopher.co.uk
thechristopher.co.uk

Nestled in history, set in the heart of Eton with mews-style rooms and impressive Grade II listed main house.

🚗 33 | 🏠 10 rooms | TO% | ● |
🚶 W&E Riverside 0.3mils | 🚗 | 🚗 WCP



Goswell House

Hotel, B&B Windsor SL4 1DS
Jakob Holder 01753 444444
stay@goswellhouse.co.uk
goswellhouse.co.uk

Self-service hotel situated 1 minute from Windsor Castle.

🚗 16 | 🏠 15 rooms | 🚶 W&E Central 0.2mils |
🚗 No WCP



The Castle Hotel Windsor

Hotel Windsor SL4 1LJ
Sam.Goss@castlehotelwindsor.com
Castlehotelwindsor.com

The Castle Hotel Windsor is located opposite Windsor Castle and Windsor Guildhall.

🚗 108 | 🏠 Varies | TO% | ● |
🚶 W&E Central 0.2mils | 🚗 No WCP



De Vere Beaumont Estate

Hotel ★★★★★ Old Windsor SL4 2JJ
Michael Yeung 07557 264471
michael.yeung@devere.com
devere.co.uk/beaumont-estate

At its heart, sits an 18th-century mansion, a chapel and a Georgian white house in 40 acres of parkland grounds.

🚗 429 | TO% | 🚶 Egham 2.5mils | 
🚗 | 🚗 Yes



Great Fosters

Hotel ★★★★★ Egham TW20 9UR
Matt Linkin 01784 433822
reservations@alexanderhotels.com
greatfosters.co.uk

Luxury hotel in extensive gardens and parkland.

🚗 53 | 🚶 Egham 1 mile | 🚗 NA



MICHELIN



Cliveden House

Hotel Nr Maidenhead SL6 0JF
Erika Steward 07889 602070
erika.steward@clivedenhouse.co.uk
www.clivedenhouse.co.uk

Historical hotel set on the 376-acre Cliveden National Trust estate.

🚗 48 | 🏠 Varies | 🚶 Bourne End 2.1mils |
🚗 | 🚗 Yes



★★★★★



Fairmont Windsor Park

Hotel ★★★★★ Nr Windsor TW20 0YL
Contact sales team 01784 535555
sales.windsorpark@fairmont.com

A beautiful hotel set in the English countryside where history and iconic elegance merge to create an outstanding destination.

🚗 200+ | TO% | 🚶 Egham | 🚗 | 🚗 Yes

Holiday Inn Express T5 Heathrow

Hotel ★★★ Slough SL3 8QB
Sugith Hewage 07851 251164
Sugith@hiexheathrowt5.com
ihg.com/holidayinnexpress/hotels/gb/en/
slough/lon/f/hoteldetail

Just off the M4 motorway, with easy access to London and Windsor and 10 minutes from Heathrow with restaurant.

🚗 300 | 🏠 NA | TO% | ● |
🚶 Slough & Windsor 3.3mils | 🚗 NA

Key: 🚗 Rooms 🏠 Group Rates TO% Tour Operator Discount ● Free Places 🚶 Railway 🚗 Coach Parking



Hurley House Ltd

Hotel Hurley SL6 5LH
Samer Shlewet 07802 770224
samer@hurleyhouse.co.uk
hurleyhouse.co.uk

Hotel with high-end restaurant, bar with event space and 10 hotel rooms.

🚗 10 | 🏠 I TO% | ● |
🚗 Maidenhead 3.9mils | 🚗



Macdonald Berystede

Hotel & Spa ★★★★★ Ascot SL5 9JH
Victoria Varley 01506 815137
sales.berystede@macdonald-hotels.co.uk
macdonaldhotels.co.uk/berystede

A beautiful, accessible, four-star hotel near Windsor which is surrounded by amazing landscaped gardens with restaurant.

🚗 126 | 🏠 I ● | 🚗 Ascot 1.3mils | 🚗 Yes



Macdonald Compleat Angler

Hotel Marlow SL7 1RG
Zoe Woods 01628 405423
specialevents.compleat@macdonald-hotels.co.uk
macdonaldhotels.co.uk/compleat-angler

Situated on the banks of the River Thames in Marlow.

🚗 64 | 🏠 I Varies | TO% | 🚗 Marlow 0.5mils | 🚗 Yes £



Macdonald Windsor

Hotel v Windsor SL4 1LH
Rachel Evans 0344 879 9101
salesmgr.windsor@macdonald-hotels.co.uk
macdonaldhotels.co.uk/windsor

Contemporary townhouse situated just two minutes' walk from Windsor Castle in the heart of this historic town.

🚗 120 | 🏠 I 8 rooms | 🚗 W&E Central 0.2mils | 🚗 No WCP

Mercure London Heathrow

Hotel ★★★★★ Hayes UB3 1LP
Sugith Hewage 07851 251164
Sugith@hiexheathrowt5.com
all.accor.com/hotel/9651/index.en.shtml??
dateIn=&nights=&compositions=1&stayplus=
false#origin=mercure

Close to London Heathrow Airport. An ideal choice for business and leisure travellers alike, with on-site Borders Restaurant.

🚗 184 | 🏠 I 10 rooms ITO% | ● |
🚗 Heathrow Airport 3mils | 🚗 NA



Sheepphouse Manor

Self Catering Maidenhead SL6 8HJ
Caroline Street 01628 776902
info@sheepphousemanor.co.uk
sheepphousemanor.co.uk

Short-term lets and holiday accommodation.

🚗 6 | 🏠 I No | 🚗 Maidenhead 2.4mils | 🚗 No



The Royal Adelaide

Boutique Hotel Windsor SL4 2AG
marketing@thechristopher.co.uk
royaladelaide.com

A hidden gem just off the famous Long Walk. A stunning Georgian building with Heritage Restaurant and Palm Court Lounge.

🚗 36 | 🏠 I 10 rooms+ | TO% | ● |
🚗 W&E Central 0.7mils | 🚗 Yes £ | 🚗 WCP

STAY IN A BOUTIQUE HOTEL WITH A FABULOUS RESTAURANT:

THE ETON MESS
GILBEY'S OF WINDSOR

See Page 18

OR TAKE A LOOK AT:

SIR CHRISTOPHER WREN -
sirchristopherwren.co.uk
THE RUNNYMEDE HOTEL -
runnymedehotel.com

PLAN A TRIP AROUND THE Christmas Festivities

The Royal Borough at Christmas has an abundance of baubles and lights, Christmas music being played, good food and merriment in picturesque settings! There's always a fabulous line-up of events, Christmas lights switch-ons, Christmas Fayres and Festive Markets. Allow time for shopping for unique gifts and gorgeous decorations.

Experience Windsor Castle decked with twinkling lights, garlands and shimmering Christmas trees.

Book a Christmas lunch, dinner or even a party!



windsor.gov.uk/ideas-and-inspiration/christmas

GENERAL INFORMATION



GETTING HERE

The Royal Borough of Windsor & Maidenhead is just 30 miles west of London with Heathrow Airport even closer, just 15 minutes away. Southampton, Luton and Gatwick Airports are within an hour and a half drive. The whole of the Royal Borough is easily accessible via the major motorway networks of the M3, M4, M25 and M40 and is well served by public transport.

ARRIVING BY AIR

Information on public transport options for travelling from the Airports to Windsor are available on the website <https://www.windsor.gov.uk/visitor-information/travel-information/getting-here/by-plane>

ARRIVING BY RAIL

Travel to Windsor

Windsor is served by two train stations: Windsor & Eton Central and Windsor & Eton Riverside. Both are situated within a few minutes' walk of Windsor Castle and the town's other attractions.

Great Western Railway from London Paddington. Change trains at Slough to catch the branch line service to Windsor & Eton Central and arrive just 6 minutes later. Travel from London Paddington to Slough in as little as 13 minutes, or from London Paddington to Windsor & Eton Central in approximately 35 minutes.

South Western Railway operates direct services from London Waterloo to Windsor & Eton Riverside station. The journey time from London is approximately 55 minutes.

Travel to Maidenhead and nearby villages

Served by trains travelling between London Paddington, Reading and Oxford, which are operated by Great Western Railway. The journey time from London takes between 20-50 minutes. Maidenhead town centre is a short walk from the station. Change here for branch line services to Cookham, Bourne End and Marlow.

Travel to Ascot

Ascot station is served by South Western Railway. The journey time from London Waterloo is just over 50 minutes. Ascot Racecourse is within walking distance of the station.

RAIL OPERATORS

Great Western Railway

Operates services between London Paddington, Reading and Oxford, as well as destinations including South Wales, the West Country, the Cotswolds. For journey times, train information and group travel offers visit <https://www.gwr.com/your-tickets/ways-to-save/group-travel>

South Western Railway

Operates train services from London Waterloo to Windsor and other services including Bournemouth and Poole, Southampton, Portsmouth and Guildford. If you are travelling in a group of between 3 and 9 people Groupsave offers savings of 34%. www.southwesternrailway.com/train-tickets/cheap-train-tickets/groupsave-and-group-travel

ARRIVING BY ROAD

M4 Exit Junction 6 for Windsor or junction 8/9 for Maidenhead, M3 Exit junction 3 (Bagshot), M25 Exit junction 13 (Egham), M40 Exit junction 4 (Marlow) or junction 2 (Beaconsfield).

COACH PARKING

Windsor Coach Park (WCP), Alma Road Windsor SL4 3HY - Charges apply Monday - Sunday between 9am-9pm (including Bank Holidays).

Cost: Up to 4 hours – £26.00 or pre-paid £22.00, 4 hours to 10 hours – £35.00 or pre-paid £30.00.

Coach Park permits (Scratch cards) - Please complete the online form my.rbwm.gov.uk/webform/coach-permit-application. Allow 10 working days to process. Tickets come in the form of a scratch card, which will need to be validated by scratching off the relevant boxes. They may be used for any date but can only be used once. It is not possible to pre-book a space and the purchase of an advance ticket does not guarantee a space.

Payment for parking can be made on the day by cash/card or RingGo but this will be at the full rate. Please ensure payment is made before you leave the car park. This is a pay and display surface parking area for coaches only with 74 spaces. Entry is allowed up to 6.30pm but exit is allowed at any time. The car park is regularly patrolled until 9.30pm.

Riverside Car Park, Maidenhead, Jenner's Riverside Gardens, Raymead Road, Maidenhead SL6 8NP - Coaches £15.00. Coaches must ring 01628 621721 to book a space. This is a pay and display car park. Please display ticket to avoid a fixed penalty (please pay car park attendant or in café). Car park closes half an hour after sunset.

ARRIVING BY EXPRESS COACH SERVICES

The Green Line 702 service provides an hourly bus service from London Victoria Coach Station to Windsor and LEGOLAND, with stops at Hyde Park Corner, Royal Albert Hall, Kensington High Street and Hammersmith. Green Line also operates the 703 service from Heathrow Terminal 5 to Windsor, LEGOLAND and Bracknell. For timetables and route maps, visit www.travelinesoutheast.org.uk.

More detailed travel information can be found at:
[windsor.gov.uk/visitor-information/travel-information](https://www.windsor.gov.uk/visitor-information/travel-information)
or specific Coach Parking information at
[windsor.gov.uk/travel-trade/coach-parking](https://www.windsor.gov.uk/travel-trade/coach-parking)

INFORMATION CENTRES

ROYAL WINDSOR INFORMATION CENTRE

The Windsor Guildhall, High Street, Windsor, Berkshire, SL4 1LR
windsor.gov.uk/visitor-information/visitor-information-centre

Information: 01753 743900, Accommodation Booking 01753 743907
windsor.tic@rbwm.gov.uk

Situated in the Windsor Guildhall, open Wed-Sun. It offers a wide range of services for both visitors and local residents.

WHERE TO STAY - Offering a range of accommodation from family-run B&Bs to luxury hotels in and around Windsor, Maidenhead, Ascot and the wider area.

TICKETS - Buy tickets for local attractions and events: Windsor Festival, LEGOLAND® Windsor Resort, Ascot Racecourse, Royal Windsor Racecourse, Royal Windsor Horse Show, boat and bus tours, guided walking tours, National Express, Theatre Royal Windsor, The Savill Garden, The Old Court.

LOCAL INFORMATION - Train and bus timetables, route planning, local attractions and events, a wide range of books, guides and postcards.

ETON INFORMATION CENTRE

67 High Street, Eton SL4 6AA
<https://www.visiteton.info/>

Information: 01753 852588 or 07828 123563 barbara@visiteton.info

Promotes the Eton Walkway, the town and its businesses. Works closely with Eton College promoting the museums and galleries, tickets for public tours. Provides walking tours of the town for groups and individuals, bespoke routes and walking maps. Children's trail of the town. Champions local art and offers opportunity for local artists to display and sell their work.



ACCESSIBILITY

TRAVELLING WITH A DISABILITY?

The nature of the Royal Borough presents some inherent problems common to many historic towns and cities. The Castle is on a steep hill and some of the shops, restaurants and hotels are less accessible to wheelchair users because of their historic nature. Whilst not all of the Borough's visitor attractions are fully accessible they are constantly working on improving their facilities. Windsor Castle is fully accessible, Legoland offers award-winning facilities including their Total Sensory Space and The Savill Garden offers an easy going route, accessible toilets and parking and continues to invest in its services for guests with disabilities. Access information is available online at www.windsor.gov.uk/visitor-information/travelling-with-a-disability.

- 01 Windsor & Eton Central
- 02 The Savill Garden
- 03 Windsor Guildhall
- 04 Great Fosters



PUTTING SUSTAINABILITY AT THE HEART OF THE Royal Borough

Our vision is to be a borough where the community collectively works together to achieve a sustainable future; by protecting and enhancing our natural environment and achieving rapid decarbonisation to net zero carbon emissions by 2050 at the latest.

Sustainability doesn't have to mean that your tours sacrifice glamour for convenience or prestige for practicality. Individual businesses are adapting how they do things to become more sustainable including the ones mentioned here.

There are locally-brewed craft beers, a gin distiller and dining establishments striving to source and serve local ingredients. Many hotel estates grow their own herbs and vegetables, support wildlife, keep beehives and support a quiet revolution with refillable toiletries, solar panel heating, plastic and food waste reduction, composting and rainwater harvesting.

Great Fosters recently switched to 100% renewable electricity supply, mainly derived from offshore wind-power farms. **The Runnymede Hotel** successfully diverts 100% of waste from landfill sites and uses an Eco-Safe Digester to aerobically digest all food waste. Wildlife supporting measures to enhance the environment include planting new native woodland and the provision of electric boats. There's an underground energy centre at **Coworth Park**, which is the UK's only hotel to grow its own fuel by cultivating willow on the estate for use in the biomass heating plant. The Spa is predominantly built from timber structures with a Living Roof of plants and herbs and the magnificent 10-acre wildflower meadow is one of the hotel's dominant external features. The **De Vere Beaumont Estate** has a Green Tourism Award.





www.windsor.gov.uk/travel-trade